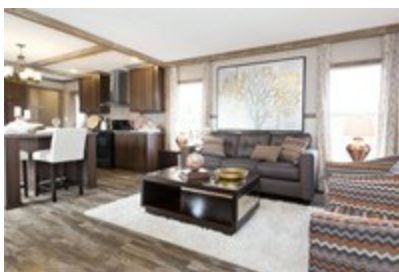
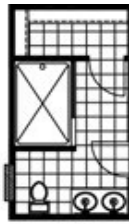




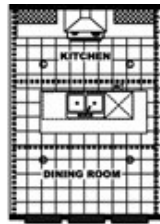
SET UP IN "The Revolution" in Maplewood Park



"The Revolution" in Maplewood Park Floor plan number: SGI016477TN
3 beds • 2 baths • 1216 sq.ft. • 16' width • 76' depth



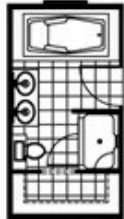
OPT/FANTASY BATH



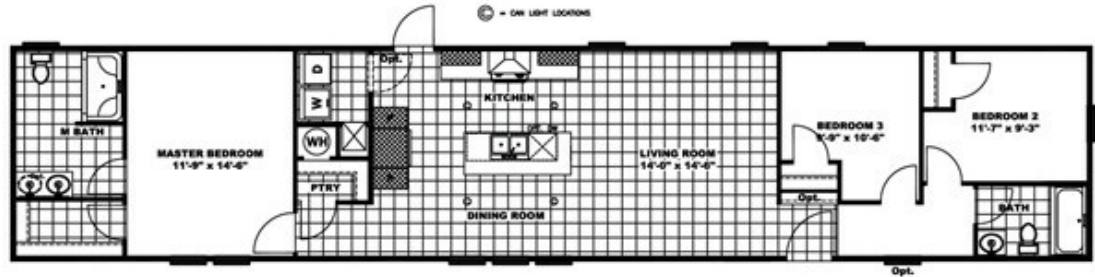
OPT/KITCHEN BEAMS



2 Bedroom Opt.



Opt. Venetian Bath



Our home building facilities invest in continuous product and process improvements. Plans, dimensions, features, materials, specifications and availability are subject to change without notice or obligation. Renderings and floor plans are representative likenesses of our homes and may differ from the actual homes. We invite you to tour a Home Center near you and inspect the highest value in quality housing available or call (318) 752-4663 to speak with a Home Consultant. Copyright 2017, CMH. All rights reserved.

CLAYTON HOMES-BOSSIER CITY

3730 EAST TEXAS AVE.
BOSSIER CITY, LA 71111

Monday - Thursday: 9am - 6pm
Friday: 9am - 5pm
Saturday: 9am - 5pm
Sunday: Closed

(318) 752-4663